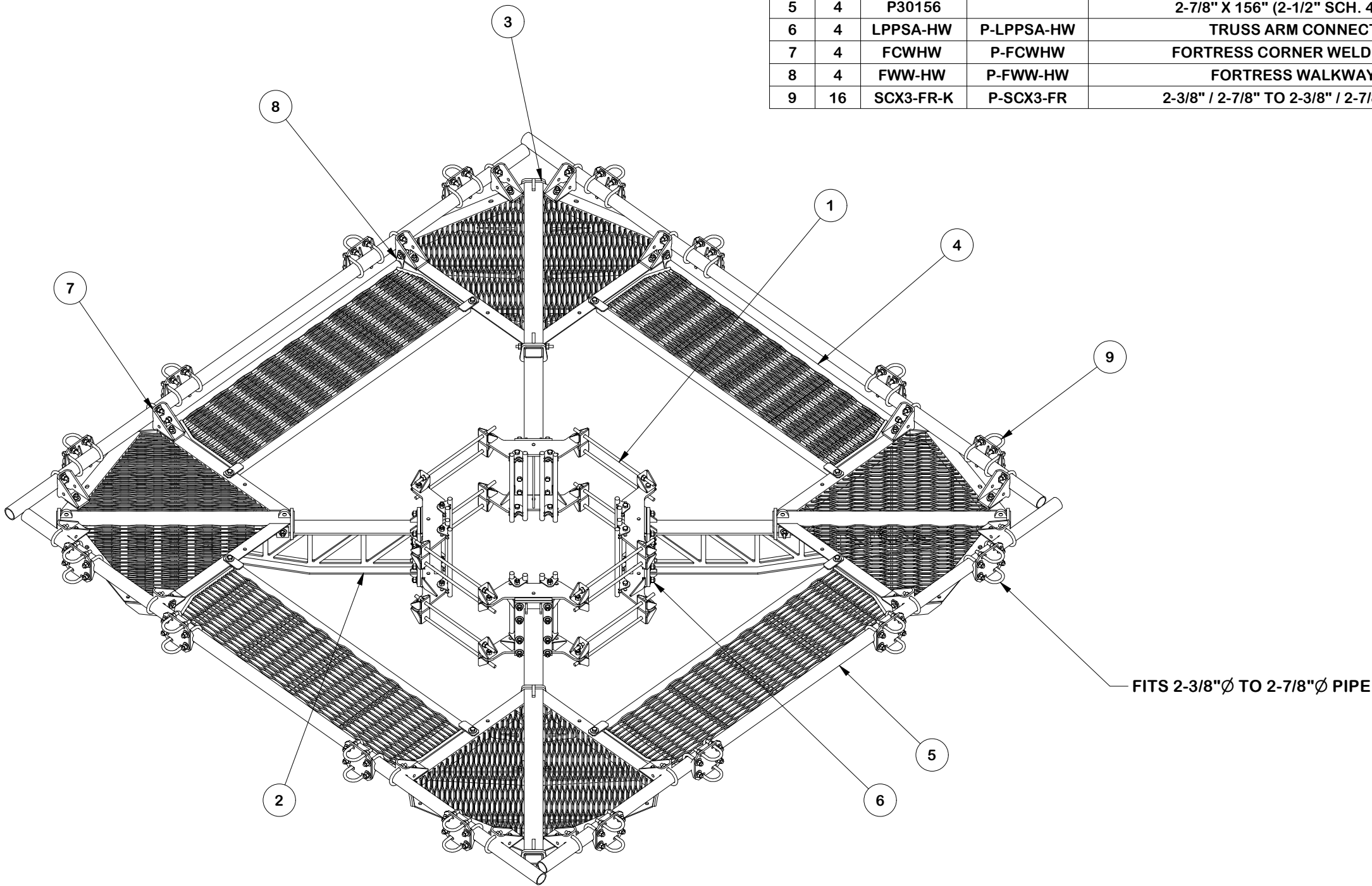


PARTS LIST								
ITEM	QTY	PART NO.	BOX NO.	PART DESCRIPTION	LENGTH	UNIT WT.	NET WT.	
1	1	FLX4-HD		FLEXIBLE RING MOUNT 4-SIDED HEAVY DUTY ASSEMBLY		504.00	504.00	
2	4	X-LPP-SA12		SIDE ARM WELDMENT FOR 12' LOW PROFILE PLATFORMS		119.21	476.84	
3	4	X-LPP-CW		LOW PROFILE PLATFORM CORNER WELDMENT		198.75	795.01	
4	4	X-LPP-W12		WALKWAY FOR 12' LOW PROFILE PLATFORM		88.87	355.47	
5	4	P30156		2-7/8" X 156" (2-1/2" SCH. 40) GALVANIZED PIPE	156 in	80.01	320.06	
6	4	LPPSA-HW	P-LPPSA-HW	TRUSS ARM CONNECTION HARDWARE		4.14	16.57	
7	4	FCWHW	P-FCWHW	FORTRESS CORNER WELDMENT HARDWARE KIT		42.70	170.80	
8	4	FWW-HW	P-FWW-HW	FORTRESS WALKWAY HARDWARE KIT		7.63	30.50	
9	16	SCX3-FR-K	P-SCX3-FR	2-3/8" / 2-7/8" TO 2-3/8" / 2-7/8" HD CROSSOVER KIT		17.53	280.53	
						TOTAL WT. #	2949.80	



FINISH:
HOT DIP GALVANIZED.

TOLERANCE NOTES

TOLERANCES ON DIMENSIONS, UNLESS OTHERWISE NOTED ARE:
SAWED, SHEARED AND GAS CUT EDGES (± 0.030")
DRILLED AND GAS CUT HOLES (± 0.030") - NO CONING OF HOLES
LASER CUT EDGES AND HOLES (± 0.010") - NO CONING OF HOLES
BENDS AND ANGLES ARE ± 1/2 DEGREE
ALL OTHER MACHINING (± 0.030")
ALL OTHER ASSEMBLY (± 0.060")

PATENT INFORMATION: WWW.SITEPRO1.COM/PATENTS

PROPRIETARY NOTE:
THE DATA AND TECHNIQUES CONTAINED IN THIS DRAWING ARE PROPRIETARY INFORMATION OF VALMONT INDUSTRIES AND CONSIDERED A TRADE SECRET. ANY USE OR DISCLOSURE WITHOUT THE CONSENT OF VALMONT INDUSTRIES IS STRICTLY PROHIBITED.

DESCRIPTION
12' FLEX FORTRESS™ QUAD-PLATFORM MOUNT
WITH WALKWAY

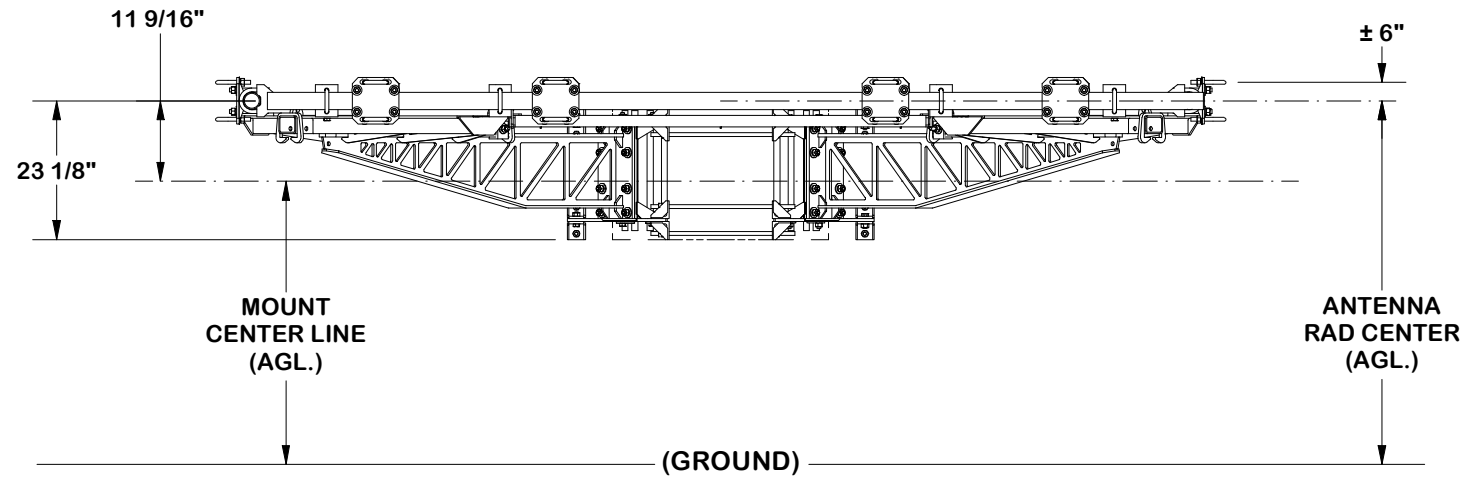
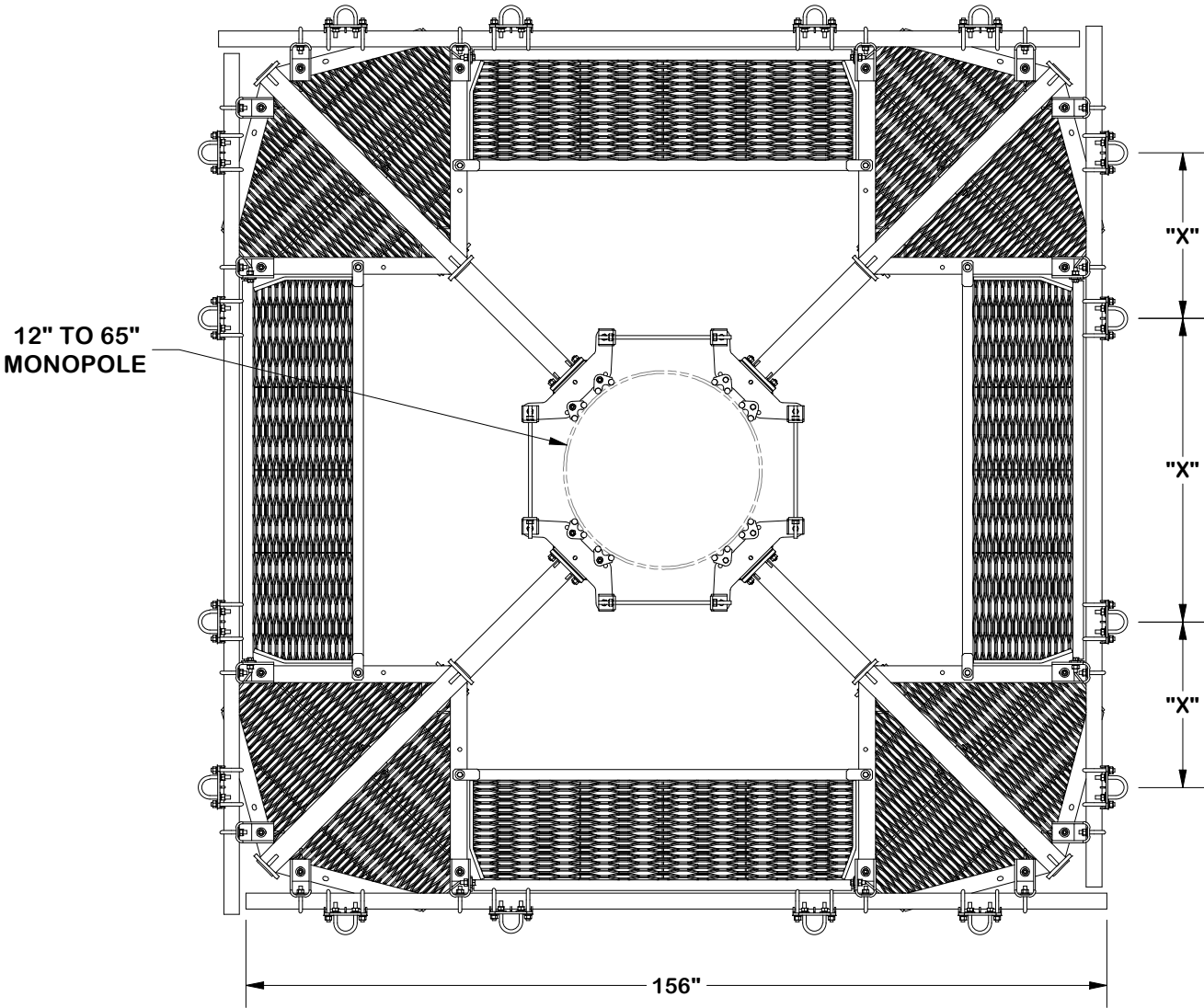
CPD NO. NCS		DRAWN BY NSP 9/25/2024		ENG. APPROVAL 1/2/2025	
CLASS 87	SUB 02	DRAWING USAGE CUSTOMER		CHECKED BY JET	1/2/2025



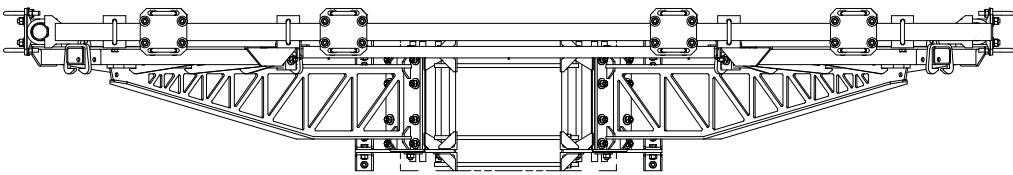
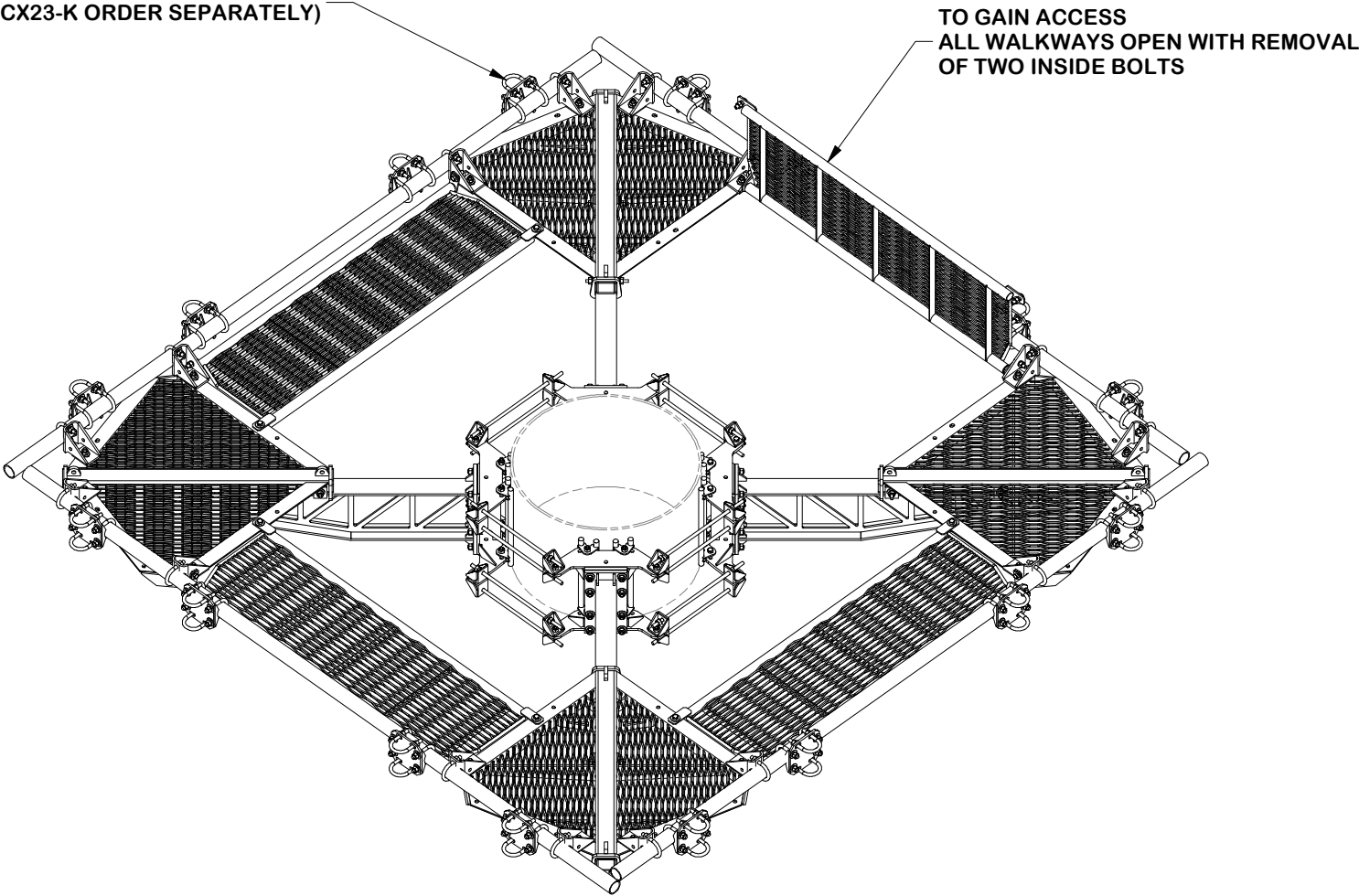
Engineering
Support Team:
sp1engineering@valmont.com

A valmont COMPANY

PART NO. FX4P-12W	PAGE 1 OF 12
DWG. NO. FX4P-12W	



FOR CROSSOVER CONNECTIONS
(P/N SCX2-K OR SCX23-K ORDER SEPARATELY)



TOLERANCE NOTES

TOLERANCES ON DIMENSIONS, UNLESS OTHERWISE NOTED ARE:
SAWED, SHEARED AND GAS CUT EDGES ($\pm 0.030"$)
DRILLED AND GAS CUT HOLES ($\pm 0.030"$) - NO CONING OF HOLES
LASER CUT EDGES AND HOLES ($\pm 0.010"$) - NO CONING OF HOLES
BENDS AND ANGLES ARE $\pm 1/2$ DEGREE
ALL OTHER MACHINING ($\pm 0.030"$)
ALL OTHER ASSEMBLY ($\pm 0.060"$)

PATENT INFORMATION: WWW.SITEPRO1.COM/PATENTS

PROPRIETARY NOTE:
THE DATA AND TECHNIQUES CONTAINED IN THIS DRAWING ARE PROPRIETARY INFORMATION OF VALMONT INDUSTRIES AND CONSIDERED A TRADE SECRET. ANY USE OR DISCLOSURE WITHOUT THE CONSENT OF VALMONT INDUSTRIES IS STRICTLY PROHIBITED.

DESCRIPTION
12' FLEX FORTRESS™ QUAD-PLATFORM MOUNT
WITH WALKWAY

CPD NO. NCS		DRAWN BY NSP 9/25/2024		ENG. APPROVAL 1/2/2025	
CLASS 87	SUB 02	DRAWING USAGE CUSTOMER		CHECKED BY JET	1/2/2025



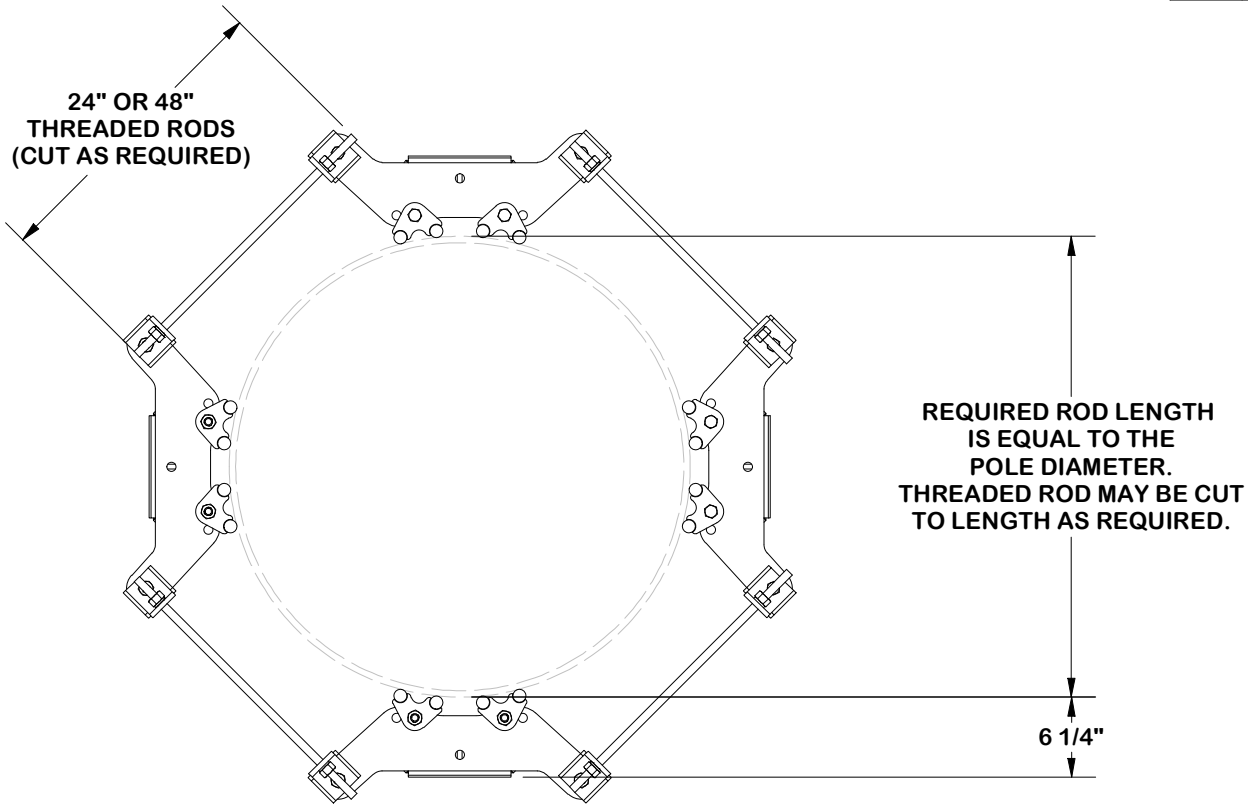
Engineering
Support Team:
sp1engineering@valmont.com

A valmont COMPANY

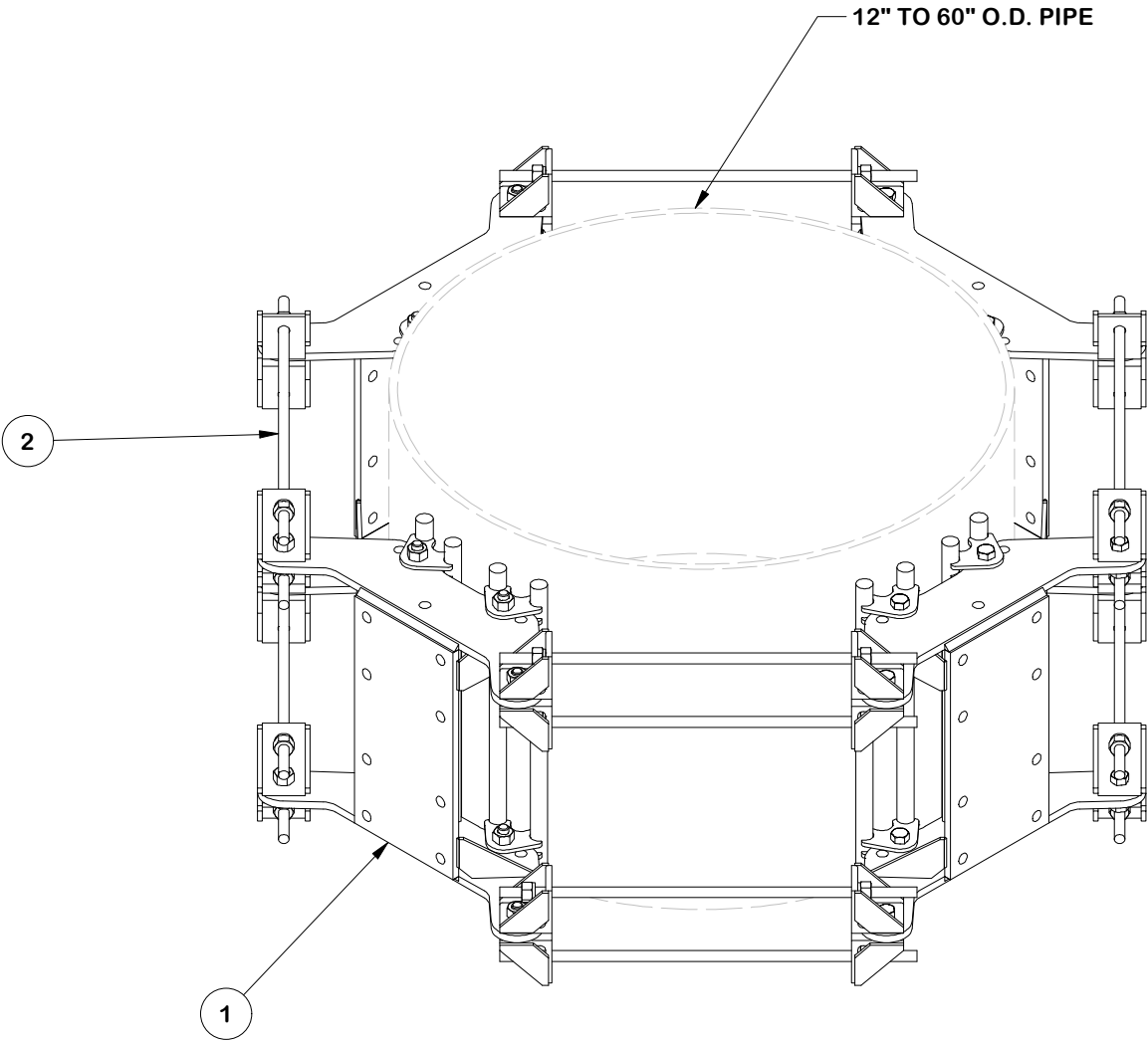
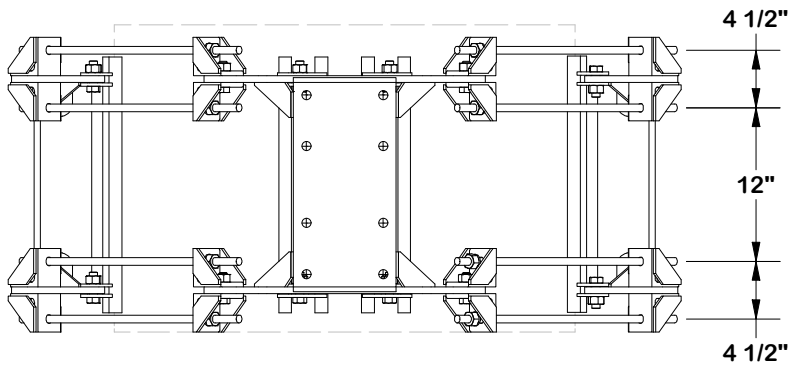
PART NO. FX4P-12W	PAGE 2 OF 12
DWG. NO. FX4P-12W	

HEAVY STAMP
PART NUMBER

PARTS LIST						
ITEM	QTY	PART NO.	BOX NO.	PART DESCRIPTION	UNIT WT.	NET WT.
1	4	FLX-HDSS		FLEXIBLE RING MOUNT HEAVY-DUTY SINGLE SECTOR ASSEMBLY	98.32	393.30
2	4	HDRM-HW		FLEXIBLE RING MOUNT HARWARE KIT	27.68	110.70
					TOTAL WT. #	504.00



NOTE:
COMPATIBLE WITH 6" X 6" HOLE PATTERN AND
FORTRESS™ STANDOFF ARM



FINISH:
HOT DIP GALVANIZED.

TOLERANCE NOTES

TOLERANCES ON DIMENSIONS, UNLESS OTHERWISE NOTED ARE:
SAWED, SHEARED AND GAS CUT EDGES ($\pm 0.030"$)
DRILLED AND GAS CUT HOLES ($\pm 0.030"$) - NO CONING OF HOLES
LASER CUT EDGES AND HOLES ($\pm 0.010"$) - NO CONING OF HOLES
BENDS AND ANGLES ARE $\pm 1/2$ DEGREE
ALL OTHER MACHINING ($\pm 0.030"$)
ALL OTHER ASSEMBLY ($\pm 0.060"$)

PATENT INFORMATION: WWW.SITEPRO1.COM/PATENTS

PROPRIETARY NOTE:
THE DATA AND TECHNIQUES CONTAINED IN THIS DRAWING ARE PROPRIETARY INFORMATION OF VALMONT INDUSTRIES AND CONSIDERED A TRADE SECRET. ANY USE OR DISCLOSURE WITHOUT THE CONSENT OF VALMONT INDUSTRIES IS STRICTLY PROHIBITED.

DESCRIPTION
12' FLEX FORTRESS™ QUAD-PLATFORM MOUNT
WITH WALKWAY

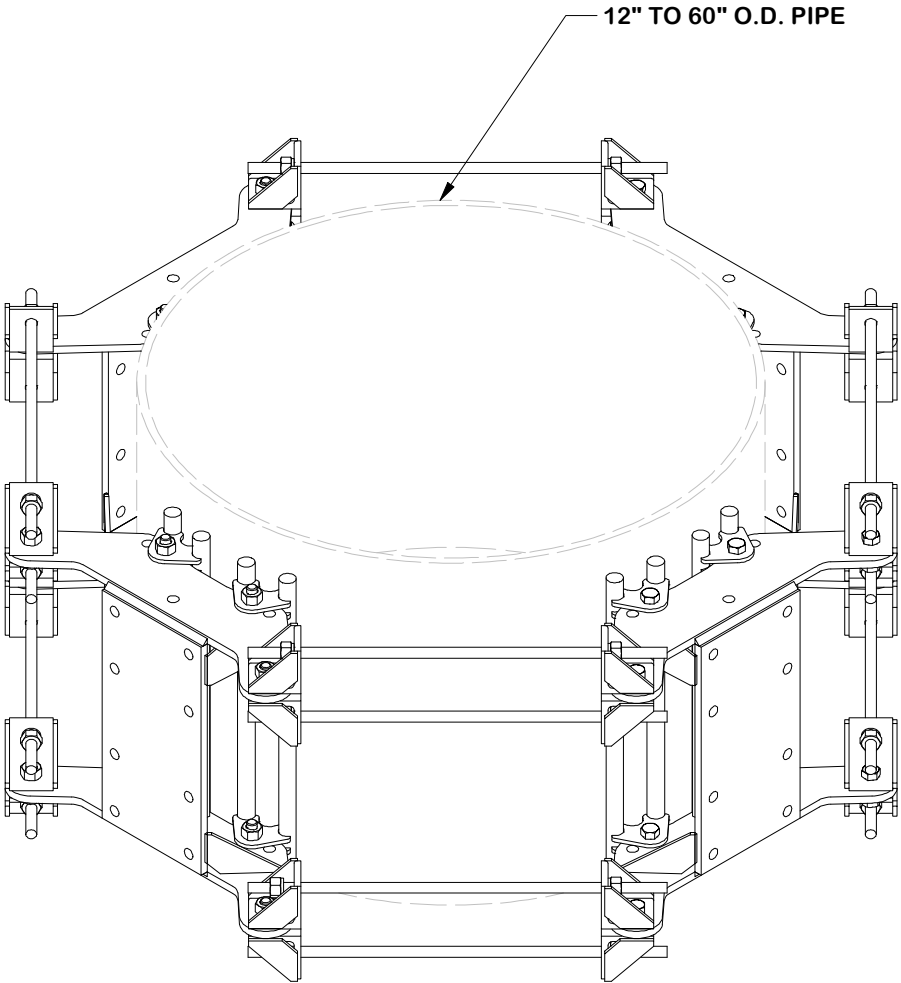
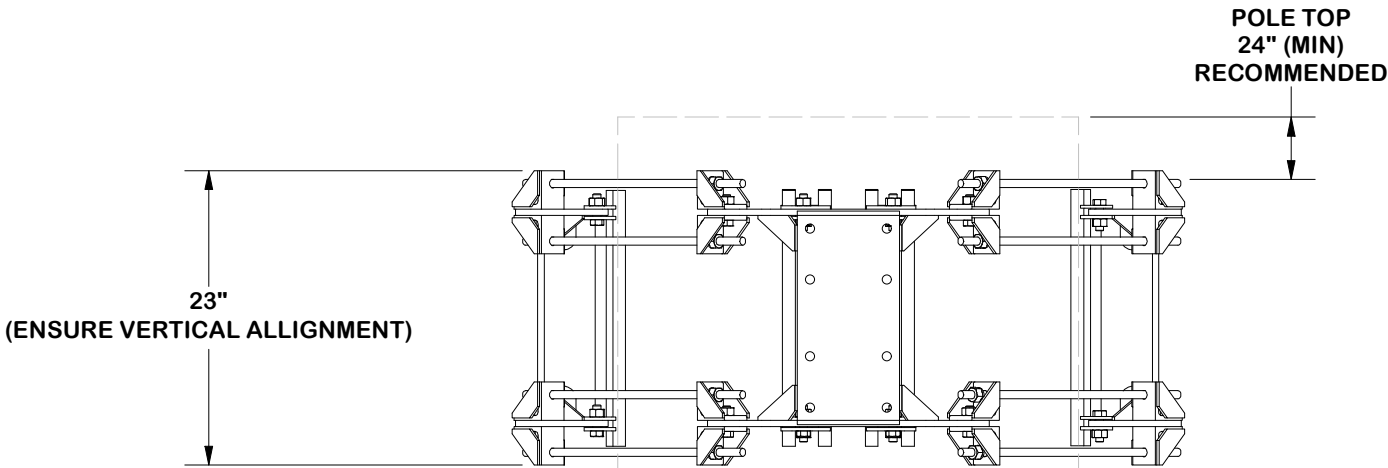
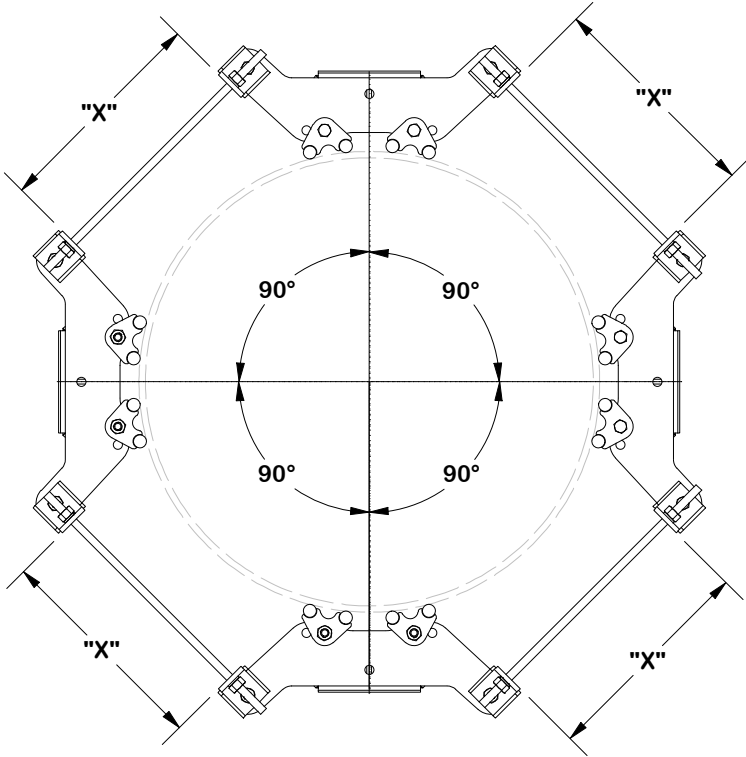
CPD NO. NCS		DRAWN BY NSP 9/25/2024		ENG. APPROVAL 1/2/2025	
CLASS 87	SUB 02	DRAWING USAGE CUSTOMER		CHECKED BY JET	1/2/2025



Engineering
Support Team:
sp1engineering@valmont.com

PART NO. FLX4-HD	3 OF 12 PAGE
DWG. NO. FX4P-12W	

NOTE:
ENSURE EQUAL DISTANCE
BETWEEN BRACKETS "X"
AND AT 120° APART



TOLERANCE NOTES

TOLERANCES ON DIMENSIONS, UNLESS OTHERWISE NOTED ARE:
SAWED, SHEARED AND GAS CUT EDGES ($\pm 0.030"$)
DRILLED AND GAS CUT HOLES ($\pm 0.030"$) - NO CONING OF HOLES
LASER CUT EDGES AND HOLES ($\pm 0.010"$) - NO CONING OF HOLES
BENDS AND ANGLES ARE $\pm 1/2$ DEGREE
ALL OTHER MACHINING ($\pm 0.030"$)
ALL OTHER ASSEMBLY ($\pm 0.060"$)

PATENT INFORMATION: WWW.SITEPRO1.COM/PATENTS

PROPRIETARY NOTE:
THE DATA AND TECHNIQUES CONTAINED IN THIS DRAWING ARE PROPRIETARY INFORMATION OF VALMONT INDUSTRIES AND CONSIDERED A TRADE SECRET. ANY USE OR DISCLOSURE WITHOUT THE CONSENT OF VALMONT INDUSTRIES IS STRICTLY PROHIBITED.

DESCRIPTION
12' FLEX FORTRESS™ QUAD-PLATFORM MOUNT
WITH WALKWAY

CPD NO. NCS		DRAWN BY NSP 9/25/2024		ENG. APPROVAL 1/2/2025	
CLASS 87	SUB 02	DRAWING USAGE CUSTOMER		CHECKED BY JET	1/2/2025

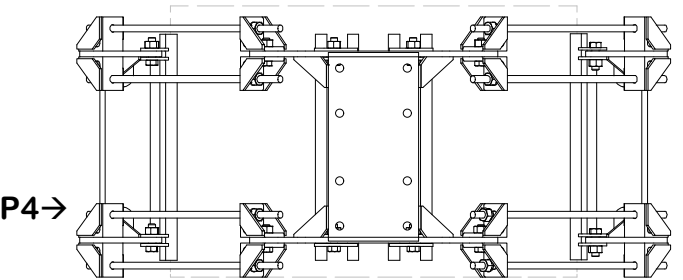
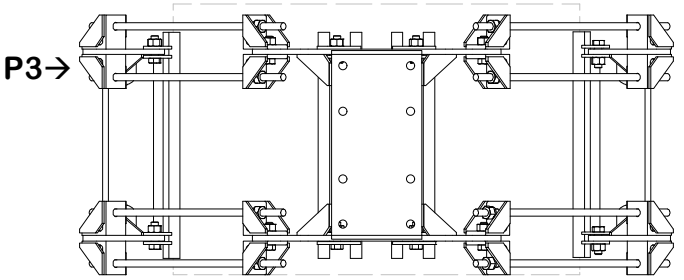
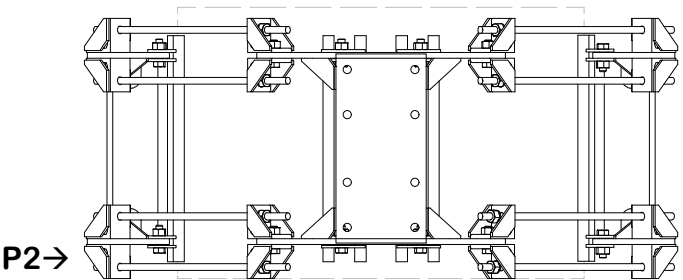
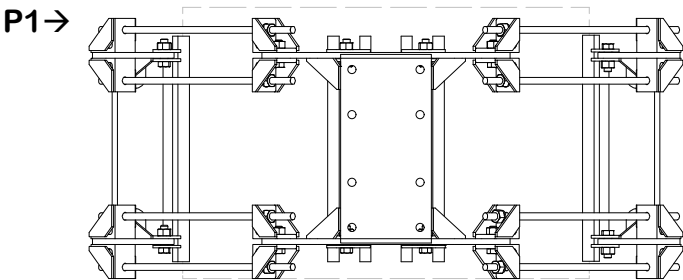


Engineering
Support Team:
sp1engineering@valmont.com

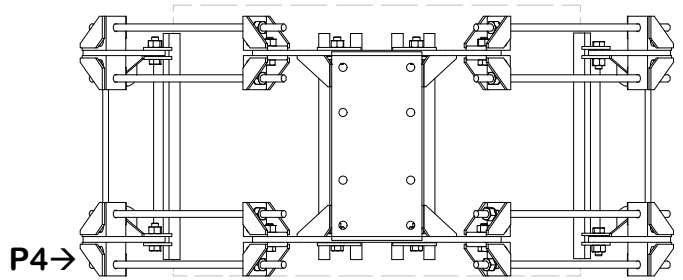
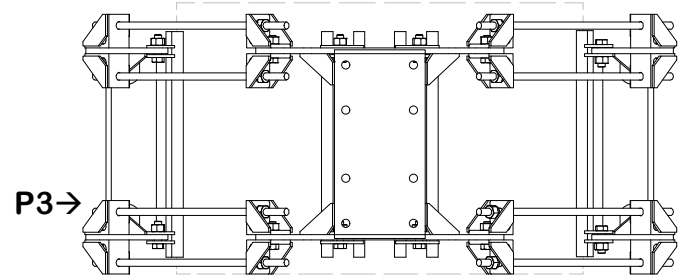
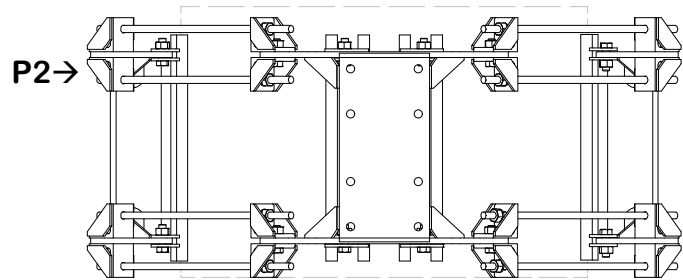
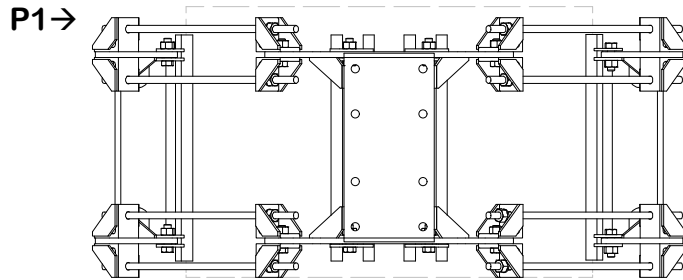
A valmont COMPANY

PART NO.	FLX4-HD
DWG. NO.	FX4P-12W

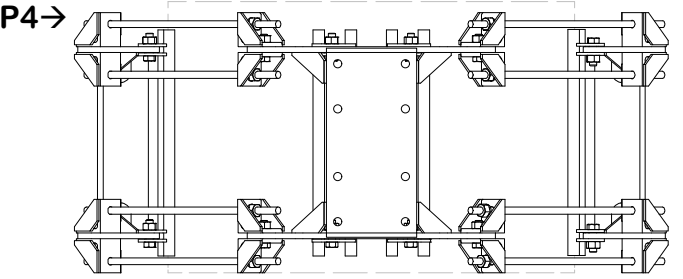
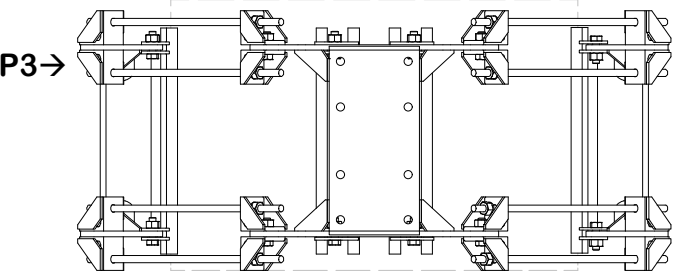
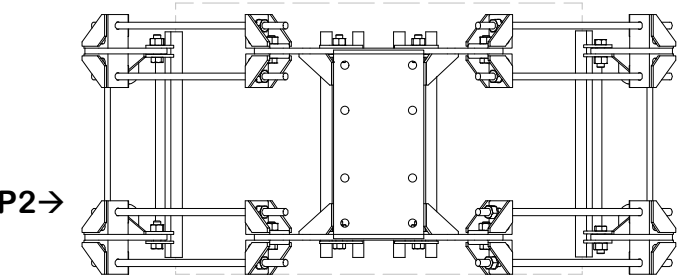
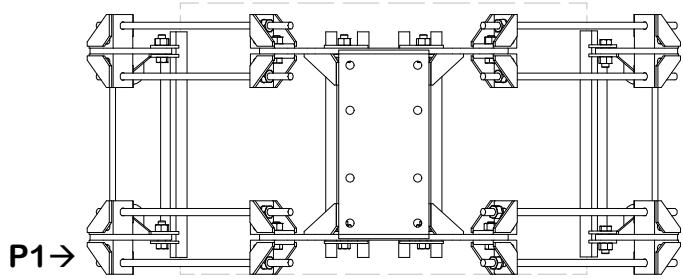
INSTALL ORDER



INITIAL TIGHTENING



FINAL TIGHTENING



TOLERANCE NOTES

TOLERANCES ON DIMENSIONS, UNLESS OTHERWISE NOTED ARE:
SAWED, SHEARED AND GAS CUT EDGES ($\pm 0.030"$)
DRILLED AND GAS CUT HOLES ($\pm 0.030"$) - NO CONING OF HOLES
LASER CUT EDGES AND HOLES ($\pm 0.010"$) - NO CONING OF HOLES
BENDS AND ANGLES ARE $\pm 1/2$ DEGREE
ALL OTHER MACHINING ($\pm 0.030"$)
ALL OTHER ASSEMBLY ($\pm 0.060"$)

PATENT INFORMATION: WWW.SITEPRO1.COM/PATENTS

PROPRIETARY NOTE:
THE DATA AND TECHNIQUES CONTAINED IN THIS DRAWING ARE PROPRIETARY INFORMATION OF VALMONT INDUSTRIES AND CONSIDERED A TRADE SECRET. ANY USE OR DISCLOSURE WITHOUT THE CONSENT OF VALMONT INDUSTRIES IS STRICTLY PROHIBITED.

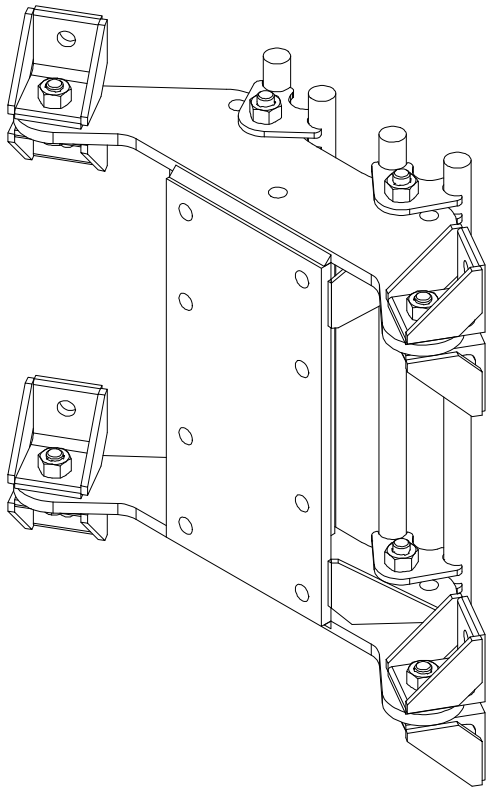
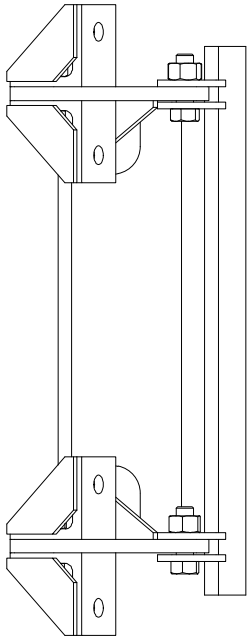
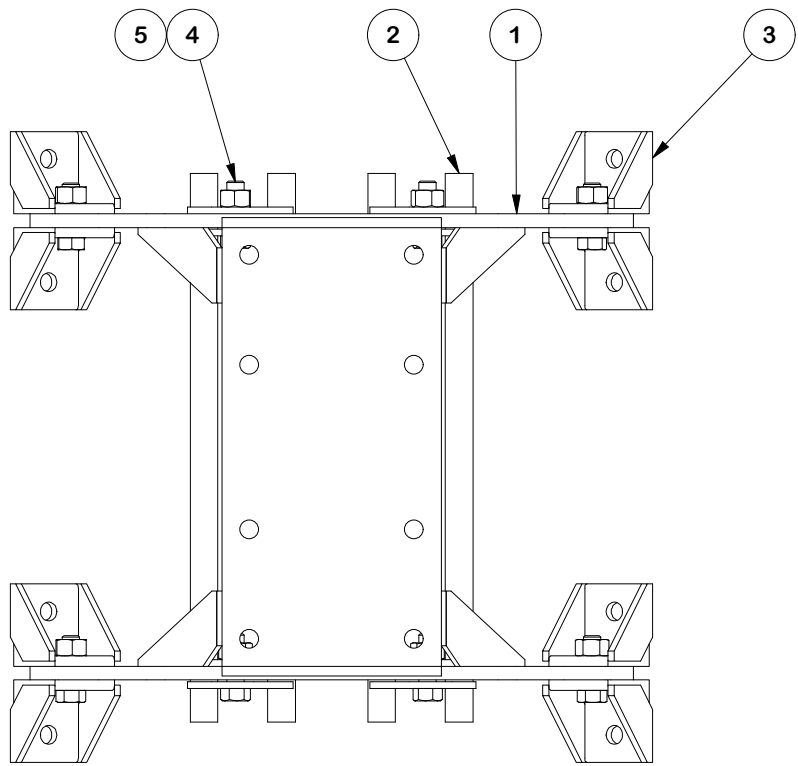
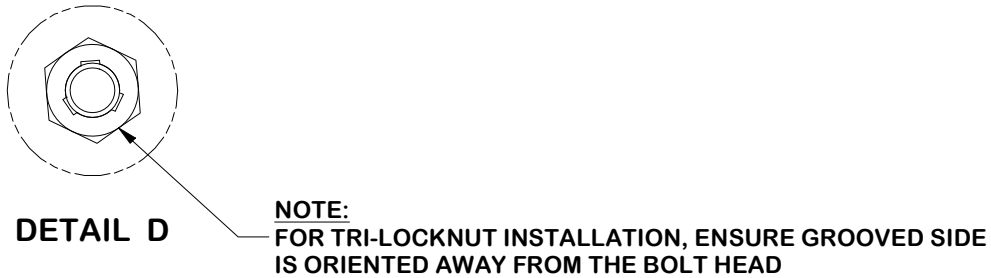
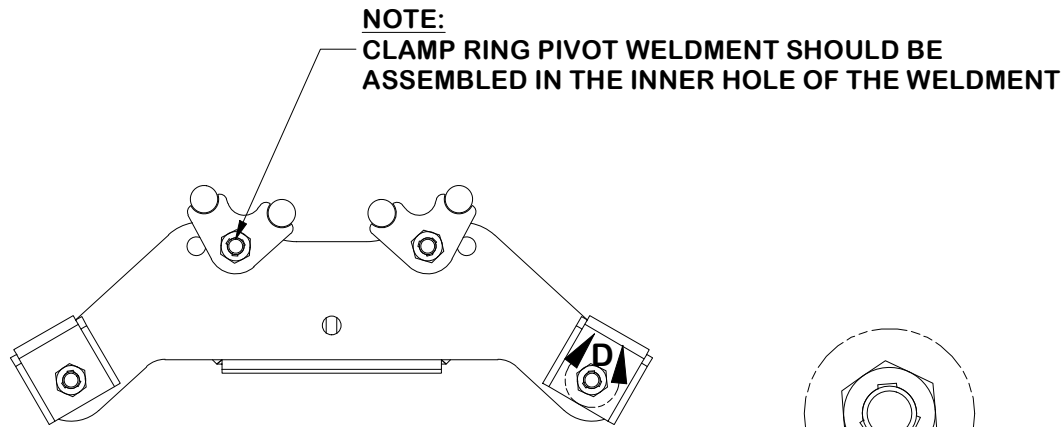
DESCRIPTION
12' FLEX FORTRESS™ QUAD-PLATFORM MOUNT
WITH WALKWAY

CPD NO. NCS		DRAWN BY NSP 9/25/2024	ENG. APPROVAL 1/2/2025
CLASS 87	SUB 02	DRAWING USAGE CUSTOMER	CHECKED BY JET 1/2/2025



Engineering
Support Team:
sp1engineering@valmont.com

PART NO. FLX4-HD	PAGE 5 OF 12
DWG. NO. FX4P-12W	



PARTS LIST					
ITEM	QTY	PART NO.	PART DESCRIPTION	UNIT WT.	NET WT.
1	1	X-CR-HDW	HEAVY FLEXIBLE RING MOUNT	55.25	55.25
2	2	X-CR-PW20	20" CLAMP RING PIVOT WELDMENT	11.12	22.25
3	8	X-CR-AGW	ANGLE ON WELDMENT	2.20	17.57
4	8	G5802	5/8" x 2" HDG HEX BOLT GR5	0.27	2.16
5	8	G58TRI-LNUT	5/8" HDG HEAVY 2H TRI-LOCK NUT	0.14	1.10
TOTAL WT. #					98.32

FINISH:
HOT DIP GALVANIZED.

TOLERANCE NOTES

TOLERANCES ON DIMENSIONS, UNLESS OTHERWISE NOTED ARE:
SAWED, SHEARED AND GAS CUT EDGES ($\pm 0.030"$)
DRILLED AND GAS CUT HOLES ($\pm 0.030"$) - NO CONING OF HOLES
LASER CUT EDGES AND HOLES ($\pm 0.010"$) - NO CONING OF HOLES
BENDS AND ANGLES ARE $\pm 1/2$ DEGREE
ALL OTHER MACHINING ($\pm 0.030"$)
ALL OTHER ASSEMBLY ($\pm 0.060"$)

PATENT INFORMATION: WWW.SITEPRO1.COM/PATENTS

PROPRIETARY NOTE:
THE DATA AND TECHNIQUES CONTAINED IN THIS DRAWING ARE PROPRIETARY INFORMATION OF VALMONT INDUSTRIES AND CONSIDERED A TRADE SECRET. ANY USE OR DISCLOSURE WITHOUT THE CONSENT OF VALMONT INDUSTRIES IS STRICTLY PROHIBITED.

DESCRIPTION
12' FLEX FORTRESS™ QUAD-PLATFORM MOUNT
WITH WALKWAY

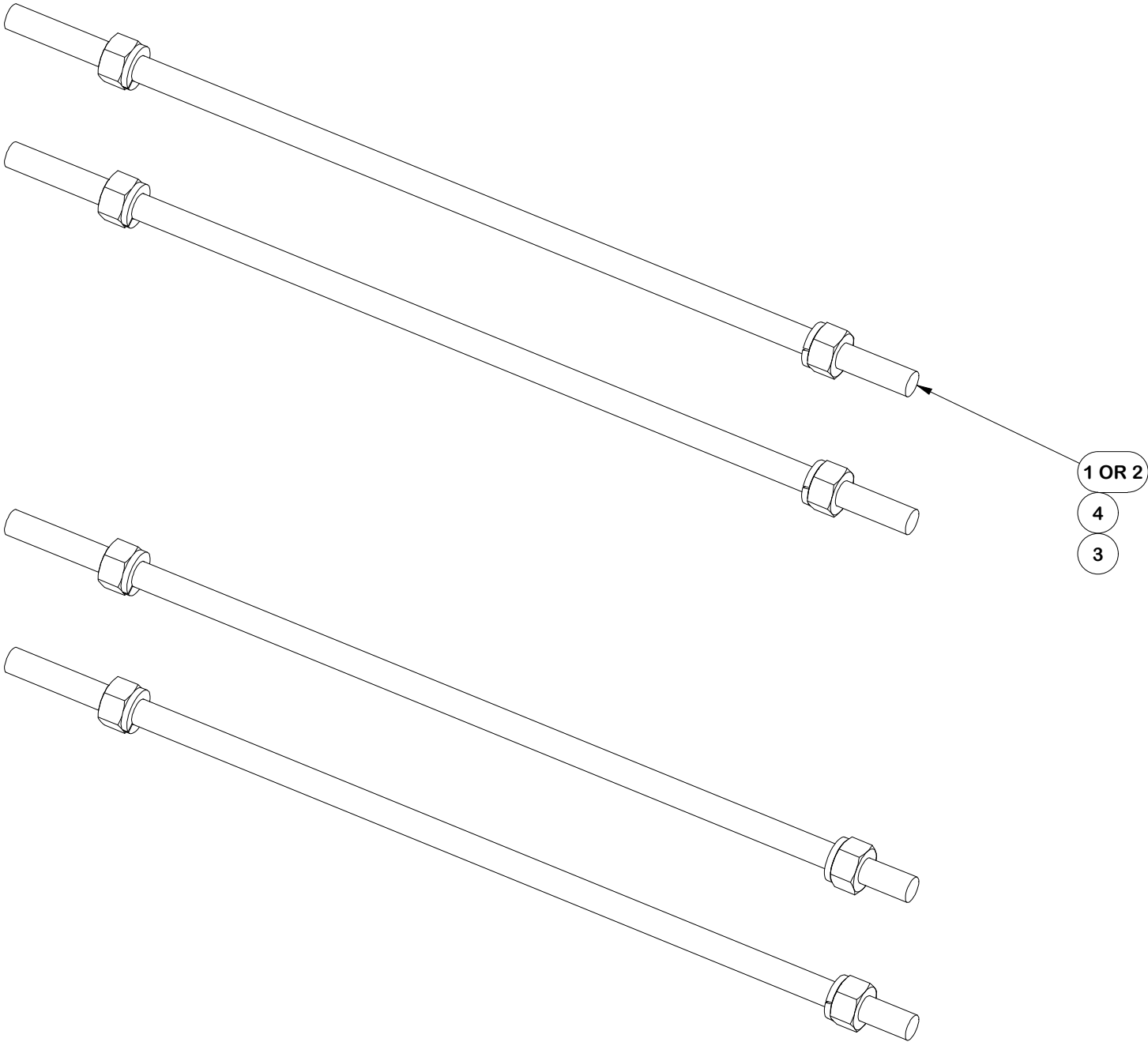
CPD NO. NCS		DRAWN BY NSP 9/25/2024		ENG. APPROVAL 1/2/2025	
CLASS 87	SUB 02	DRAWING USAGE CUSTOMER		CHECKED BY JET	1/2/2025




Engineering
Support Team:
sp1engineering@valmont.com

PART NO. FLX-HDSS	6 OF 12 PAGE
DWG. NO. FX4P-12W	

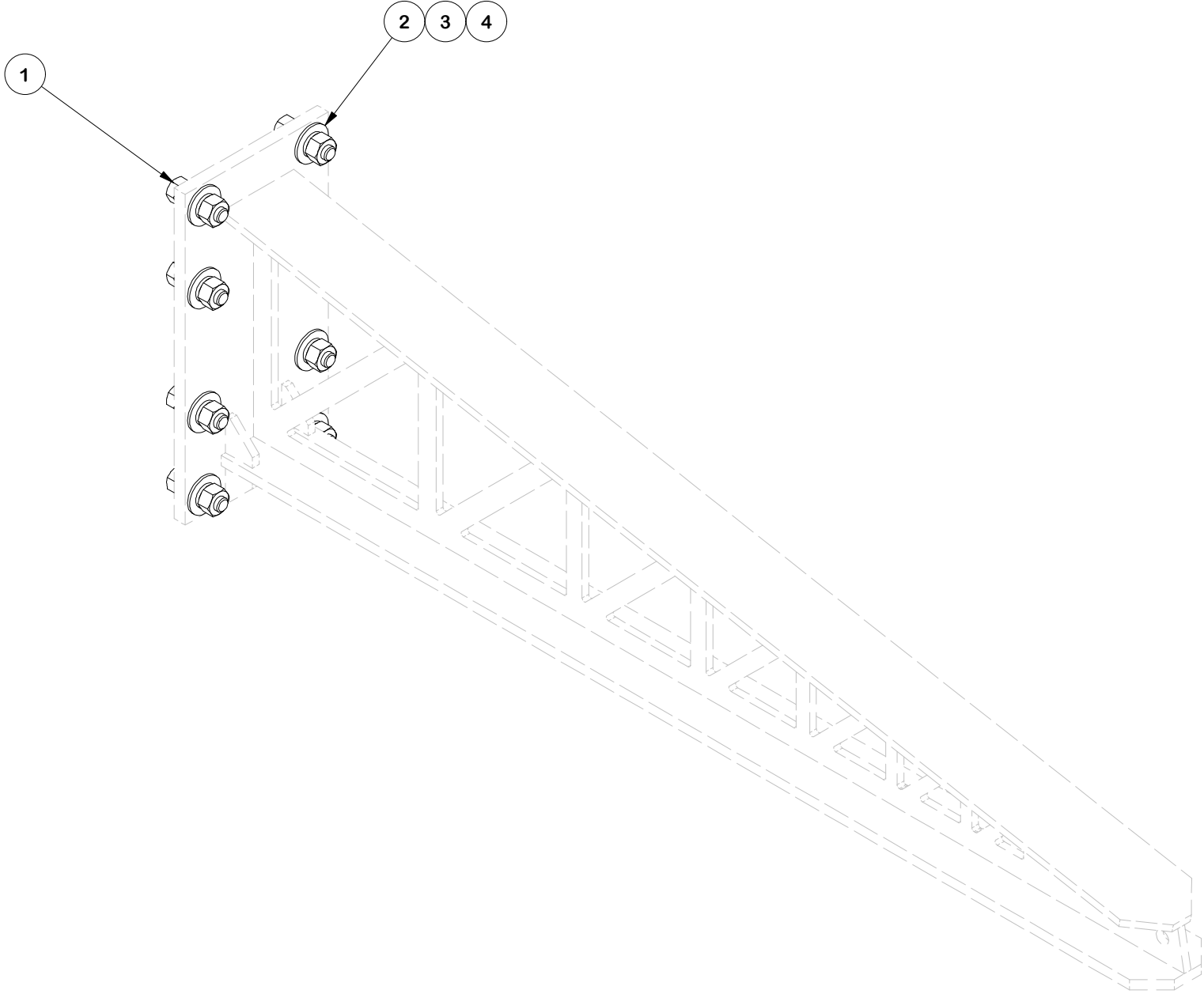
PARTS LIST					
ITEM	QTY	PART NO.	PART DESCRIPTION	UNIT WT.	NET WT.
1	4	G58R-48	5/8" X 48" GALV THREADED ROD	4.39	17.56
2	4	G58R-24	5/8" X 24" THREADED ROD (HDG.)	2.22	8.87
3	8	G58LW	5/8" HDG LOCKWASHER	0.03	0.21
4	8	G58NUT	5/8" HDG HEAVY 2H HEX NUT	0.13	1.04
TOTAL WT. #					28.30



FINISH:
HOT DIP GALVANIZED.

	<div>TOLERANCE NOTES</div> <div>TOLERANCES ON DIMENSIONS, UNLESS OTHERWISE NOTED ARE: SAWED, SHEARED AND GAS CUT EDGES ($\pm 0.030''$) DRILLED AND GAS CUT HOLES ($\pm 0.030''$) - NO CONING OF HOLES LASER CUT EDGES AND HOLES ($\pm 0.010''$) - NO CONING OF HOLES BENDS AND ANGLES ARE $\pm 1/2$ DEGREE ALL OTHER MACHINING ($\pm 0.030''$) ALL OTHER ASSEMBLY ($\pm 0.060''$)</div>			<div>DESCRIPTION</div> <div>12' FLEX FORTRESS™ QUAD-PLATFORM MOUNT WITH WALKWAY</div>			<div><div><div>SITE PRO</div><div>1</div></div><div>Engineering Support Team: sp1engineering@valmont.com</div></div> <div>A valmont  COMPANY</div>			PAGE 7 OF 12
	PATENT INFORMATION: WWW.SITEPRO1.COM/PATENTS			CPD NO. NCS	DRAWN BY NSP 9/25/2024	ENG. APPROVAL 1/2/2025	PART NO. HDRM-HW			
	PROPRIETARY NOTE: THE DATA AND TECHNIQUES CONTAINED IN THIS DRAWING ARE PROPRIETARY INFORMATION OF VALMONT INDUSTRIES AND CONSIDERED A TRADE SECRET. ANY USE OR DISCLOSURE WITHOUT THE CONSENT OF VALMONT INDUSTRIES IS STRICTLY PROHIBITED.			CLASS 87	SUB 02	DRAWING USAGE CUSTOMER	CHECKED BY JET 1/2/2025	DWG. NO. FX4P-12W		

PARTS LIST					
ITEM	QTY	PART NO.	PART DESCRIPTION	LENGTH	UNIT WT.
1	8	G58214	5/8" x 2-1/4" HDG HEX BOLT GR5		0.29
2	8	G58FW	5/8" HDG USS FLATWASHER	1/8 in	0.07
3	8	G58LW	5/8" HDG LOCKWASHER		0.03
4	8	G58NUT	5/8" HDG HEAVY 2H HEX NUT		0.13
TOTAL WT. #					4.14



TOLERANCE NOTES

TOLERANCES ON DIMENSIONS, UNLESS OTHERWISE NOTED ARE:
SAWED, SHEARED AND GAS CUT EDGES ($\pm 0.030''$)
DRILLED AND GAS CUT HOLES ($\pm 0.030''$) - NO CONING OF HOLES
LASER CUT EDGES AND HOLES ($\pm 0.010''$) - NO CONING OF HOLES
BENDS AND ANGLES ARE $\pm 1/2$ DEGREE
ALL OTHER MACHINING ($\pm 0.030''$)
ALL OTHER ASSEMBLY ($\pm 0.060''$)

PATENT INFORMATION: WWW.SITEPRO1.COM/PATENTS

PROPRIETARY NOTE:
THE DATA AND TECHNIQUES CONTAINED IN THIS DRAWING ARE PROPRIETARY INFORMATION OF VALMONT INDUSTRIES AND CONSIDERED A TRADE SECRET. ANY USE OR DISCLOSURE WITHOUT THE CONSENT OF VALMONT INDUSTRIES IS STRICTLY PROHIBITED.

DESCRIPTION
12' FLEX FORTRESS™ QUAD-PLATFORM MOUNT
WITH WALKWAY

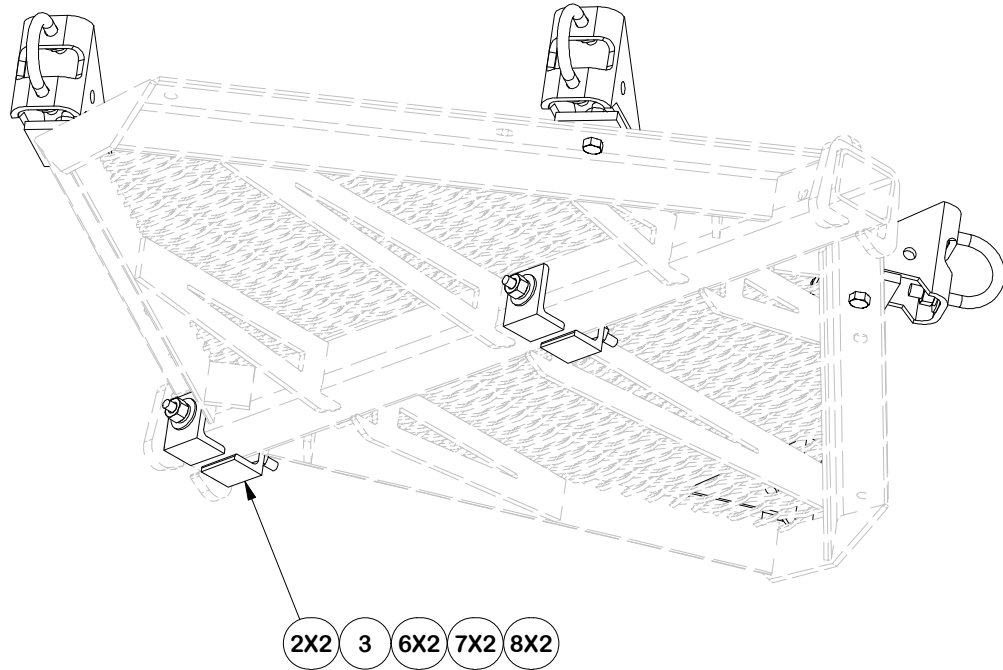
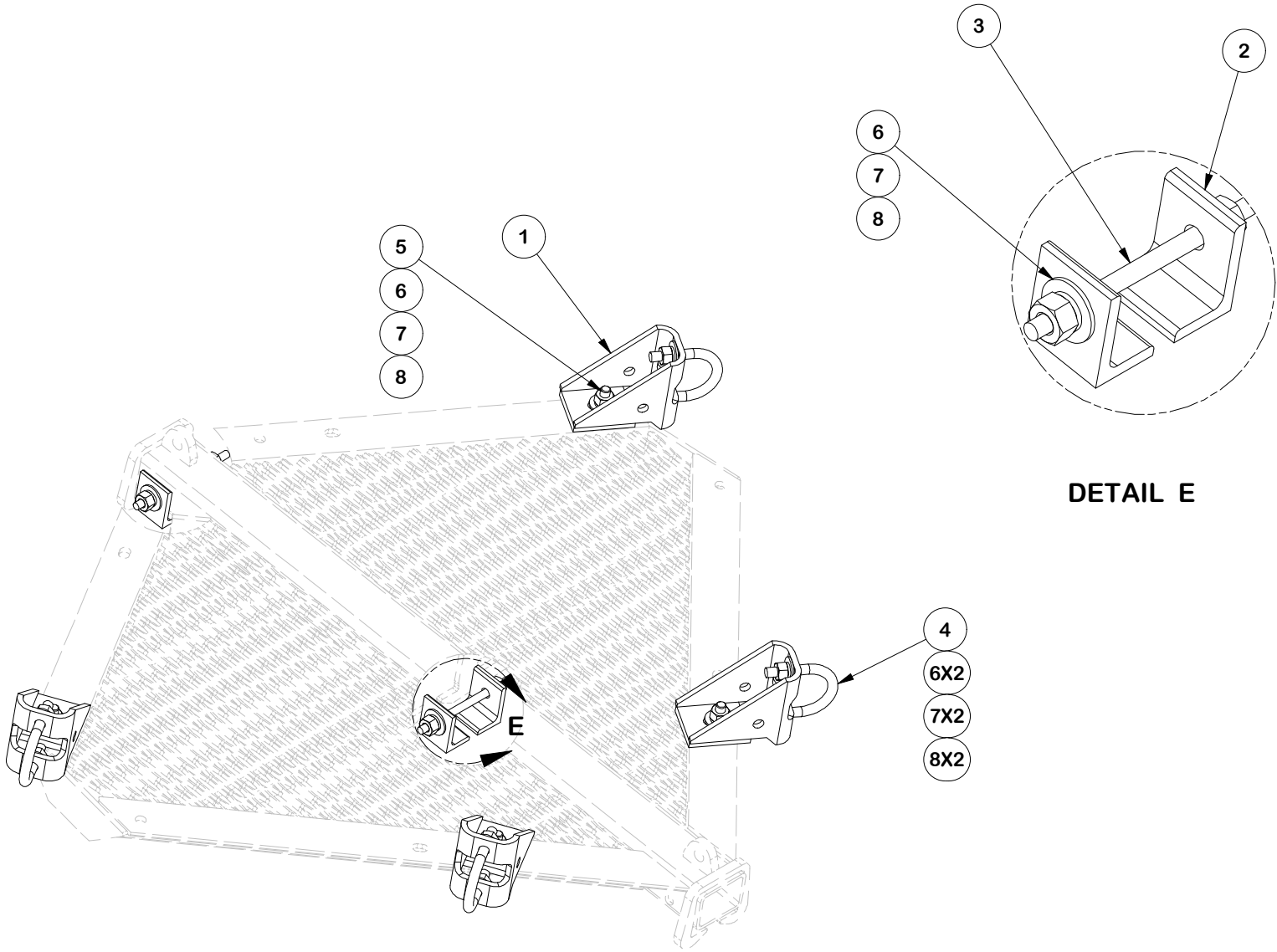
CPD NO. NCS		DRAWN BY NSP 9/25/2024	ENG. APPROVAL 1/2/2025
CLASS 87	SUB 02	DRAWING USAGE CUSTOMER	CHECKED BY JET 1/2/2025



Engineering
Support Team:
sp1engineering@valmont.com

PART NO. LPPSA-HW	PAGE 8 OF 12
DWG. NO. FX4P-12W	

PARTS LIST						
ITEM	QTY	PART NO.	PART DESCRIPTION	LENGTH	UNIT WT.	NET WT.
1	4	X-LPP-PC	FACE PIPE CONNECTION BRACKET FORTRESS PLATFORM		7.01	28.04
2	4	X-LPP-A7	CORNER WELDMENT ATTACHMENT ANGLE	2 1/2 in	1.27	5.08
3	2	G12R-8	1/2" x 8" THREADED ROD (HDG.)		0.45	0.89
4	4	X-UB5304	5/8" X 3" X 4-1/4" X 2-1/2" U-BOLT (HDG.)		0.98	3.90
5	4	G58214	5/8" x 2-1/4" HDG HEX BOLT GR5		0.29	1.17
6	16	G58FW	5/8" HDG USS FLATWASHER	1/8 in	0.07	1.13
7	16	G58LW	5/8" HDG LOCKWASHER		0.03	0.42
8	16	G58NUT	5/8" HDG HEAVY 2H HEX NUT		0.13	2.08
					TOTAL WT. #	42.70



REPRESENTATION VIEW FOR
3-SIDED FORTRESS

TOLERANCE NOTES

TOLERANCES ON DIMENSIONS, UNLESS OTHERWISE NOTED ARE:
SAWED, SHEARED AND GAS CUT EDGES ($\pm 0.030"$)
DRILLED AND GAS CUT HOLES ($\pm 0.030"$) - NO CONING OF HOLES
LASER CUT EDGES AND HOLES ($\pm 0.010"$) - NO CONING OF HOLES
BENDS AND ANGLES ARE $\pm 1/2$ DEGREE
ALL OTHER MACHINING ($\pm 0.030"$)
ALL OTHER ASSEMBLY ($\pm 0.060"$)

PATENT INFORMATION: WWW.SITEPRO1.COM/PATENTS

PROPRIETARY NOTE:
THE DATA AND TECHNIQUES CONTAINED IN THIS DRAWING ARE PROPRIETARY INFORMATION OF VALMONT INDUSTRIES AND CONSIDERED A TRADE SECRET. ANY USE OR DISCLOSURE WITHOUT THE CONSENT OF VALMONT INDUSTRIES IS STRICTLY PROHIBITED.

DESCRIPTION

12' FLEX FORTRESS™ QUAD-PLATFORM MOUNT
WITH WALKWAY

CPD NO.

NCS

DRAWN BY

NSP 9/25/2024

ENG. APPROVAL

1/2/2025

CLASS

87

SUB

02

DRAWING USAGE

CUSTOMER

CHECKED BY

JET

1/2/2025



Engineering
Support Team:
sp1engineering@valmont.com

A valmont COMPANY

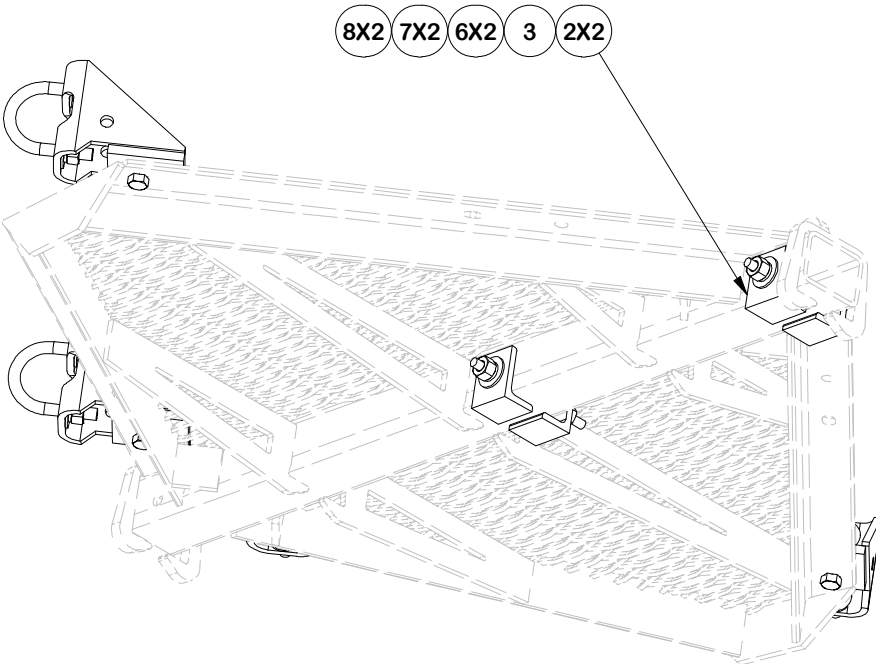
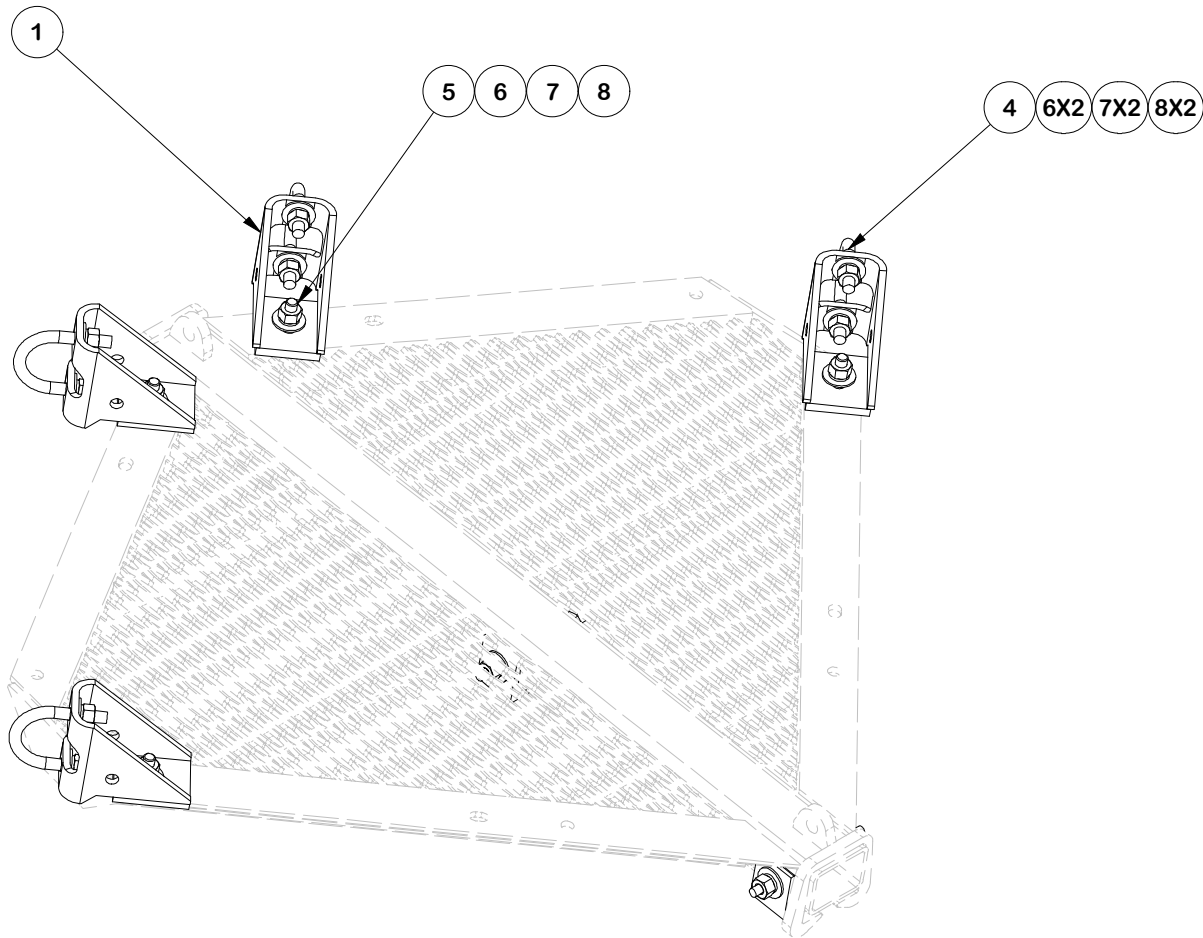
PART NO.

FCWHW

DWG. NO.

FX4P-12W

NOTE: FOR 4-SIDED ASSEMBLY, ONLY POSITION OF FACE PIPE CONNECTION BRACKET CHANGES



REPRESENTATION VIEW FOR
4-SIDED FORTRESS

TOLERANCE NOTES

TOLERANCES ON DIMENSIONS, UNLESS OTHERWISE NOTED ARE:
SAWED, SHEARED AND GAS CUT EDGES ($\pm 0.030"$)
DRILLED AND GAS CUT HOLES ($\pm 0.030"$) - NO CONING OF HOLES
LASER CUT EDGES AND HOLES ($\pm 0.010"$) - NO CONING OF HOLES
BENDS AND ANGLES ARE $\pm 1/2$ DEGREE
ALL OTHER MACHINING ($\pm 0.030"$)
ALL OTHER ASSEMBLY ($\pm 0.060"$)

PATENT INFORMATION: WWW.SITEPRO1.COM/PATENTS

PROPRIETARY NOTE:
THE DATA AND TECHNIQUES CONTAINED IN THIS DRAWING ARE PROPRIETARY INFORMATION OF VALMONT INDUSTRIES AND CONSIDERED A TRADE SECRET. ANY USE OR DISCLOSURE WITHOUT THE CONSENT OF VALMONT INDUSTRIES IS STRICTLY PROHIBITED.

DESCRIPTION
12' FLEX FORTRESS™ QUAD-PLATFORM MOUNT
WITH WALKWAY

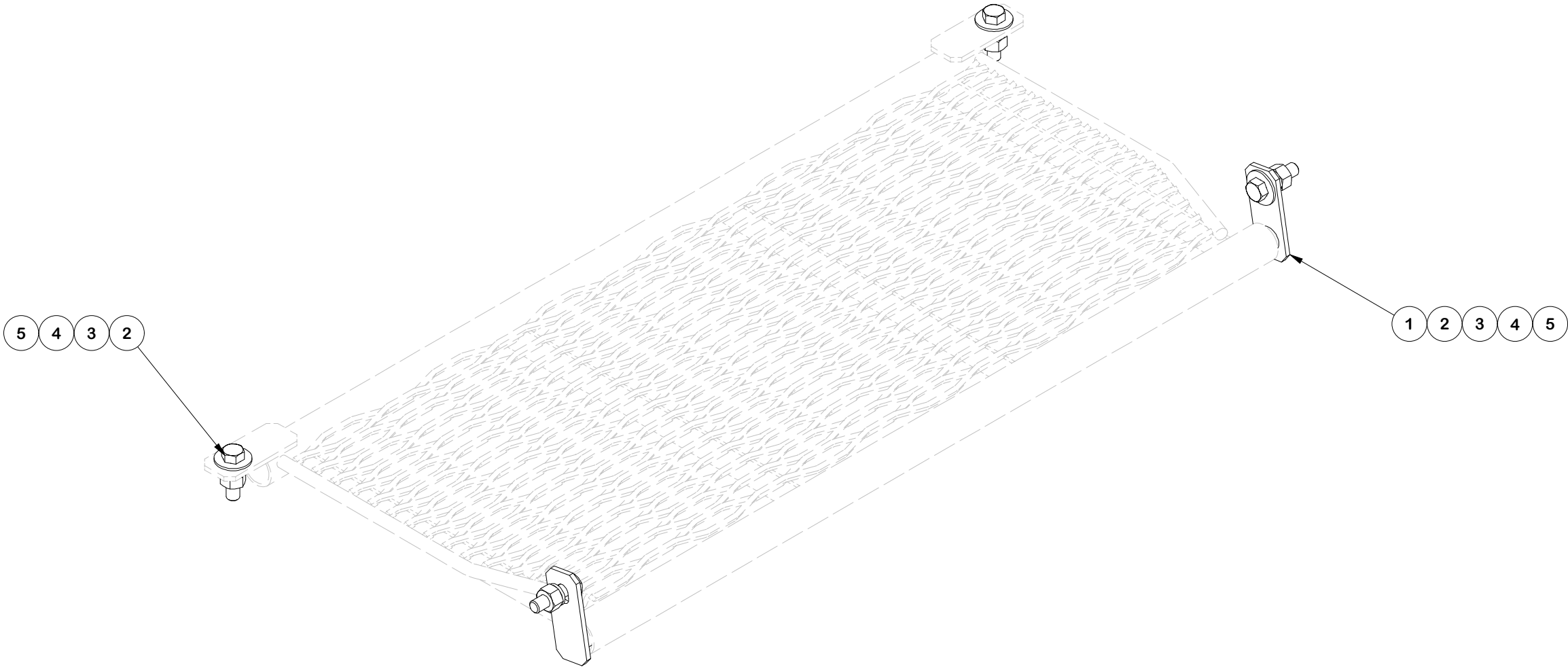
CPD NO. NCS		DRAWN BY NSP 9/25/2024		ENG. APPROVAL 1/2/2025	
CLASS 87	SUB 02	DRAWING USAGE CUSTOMER		CHECKED BY JET	1/2/2025



Engineering
Support Team:
sp1engineering@valmont.com

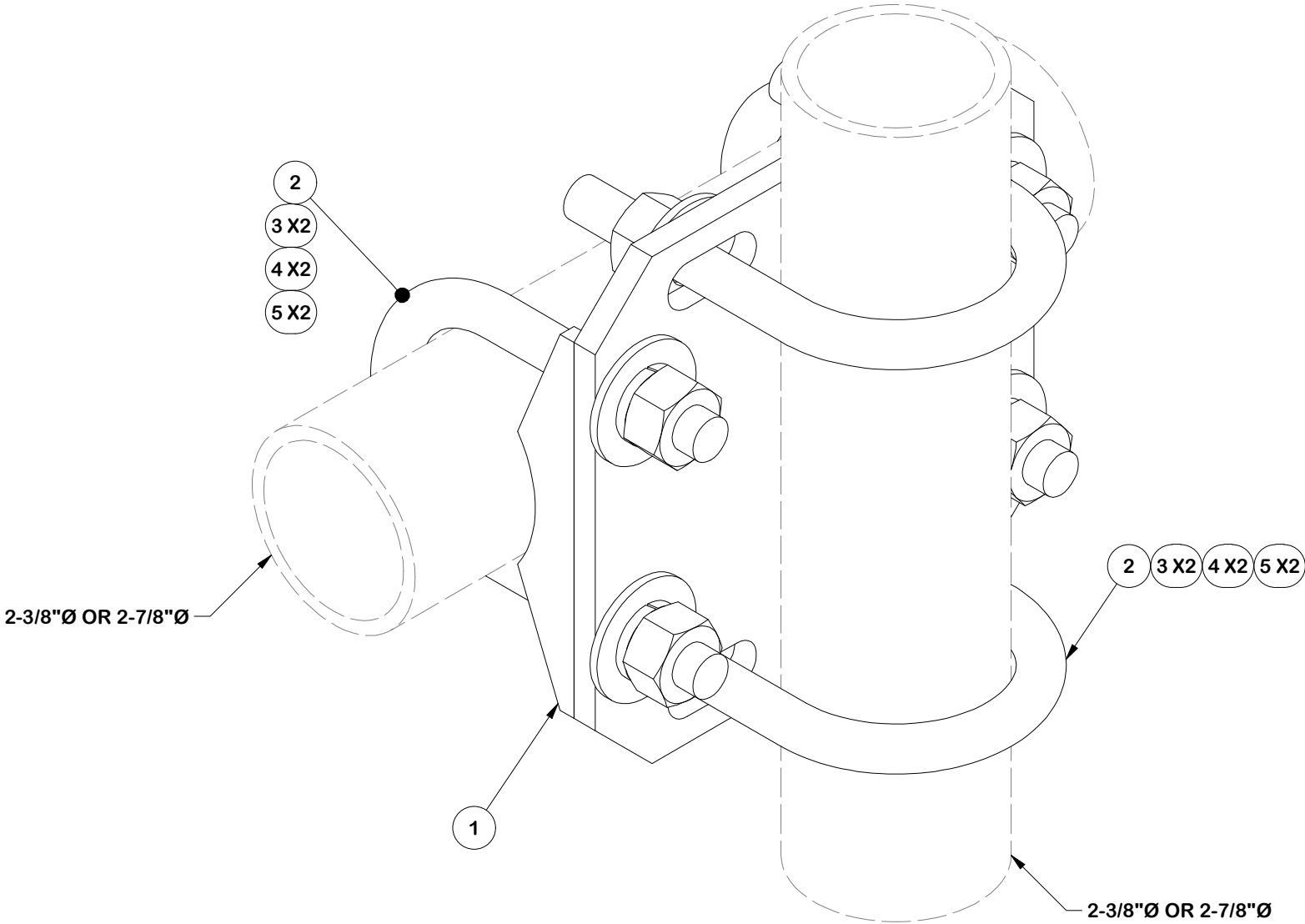
PART NO. FCWHW	PAGE 10 OF 12
DWG. NO. FX4P-12W	

PARTS LIST						
ITEM	QTY	PART NO.	PART DESCRIPTION	LENGTH	UNIT WT.	NET WT.
1	2	X-LPP-H	HINGE FOR LOW PROFILE PLATFORM WALKWAY		2.78	5.55
2	4	G58214	5/8" x 2-1/4" HDG HEX BOLT GR5		0.29	1.17
3	4	G58FW	5/8" HDG USS FLATWASHER	1/8 in	0.07	0.28
4	4	G58LW	5/8" HDG LOCKWASHER		0.03	0.10
5	4	G58NUT	5/8" HDG HEAVY 2H HEX NUT		0.13	0.52
					TOTAL WT. #	7.63



	<div>TOLERANCE NOTES</div> <div>TOLERANCES ON DIMENSIONS, UNLESS OTHERWISE NOTED ARE: SAWED, SHEARED AND GAS CUT EDGES (± 0.030") DRILLED AND GAS CUT HOLES (± 0.030") - NO CONING OF HOLES LASER CUT EDGES AND HOLES (± 0.010") - NO CONING OF HOLES BENDS AND ANGLES ARE ± 1/2 DEGREE ALL OTHER MACHINING (± 0.030") ALL OTHER ASSEMBLY (± 0.060")</div>			<div>DESCRIPTION</div> <div>12' FLEX FORTRESS™ QUAD-PLATFORM MOUNT WITH WALKWAY</div>			<div><div><div>SITE PRO 1</div><div>A valmont COMPANY</div></div><div>Engineering Support Team: sp1engineering@valmont.com</div></div>		
	PATENT INFORMATION: WWW.SITEPRO1.COM/PATENTS			CPD NO. NCS	DRAWN BY NSP 9/25/2024	ENG. APPROVAL 1/2/2025	PART NO. FWW-HW	PAGE 11 OF 12	
	PROPRIETARY NOTE: THE DATA AND TECHNIQUES CONTAINED IN THIS DRAWING ARE PROPRIETARY INFORMATION OF VALMONT INDUSTRIES AND CONSIDERED A TRADE SECRET. ANY USE OR DISCLOSURE WITHOUT THE CONSENT OF VALMONT INDUSTRIES IS STRICTLY PROHIBITED.			CLASS 87	SUB 02	DRAWING USAGE CUSTOMER	CHECKED BY JET 1/2/2025		DWG. NO. FX4P-12W

PARTS LIST						
ITEM	QTY	PART NO.	PART DESCRIPTION	LENGTH	UNIT WT.	NET WT.
1	1	X-SCX3-FR	FORTRESS CROSSOVER PLATE		6.61	6.61
2	4	X-UB5300	5/8" X 3" X 5-1/4" X 2-1/2" U-BOLT	5 1/4 in	1.22	4.87
2	4	X-UB5258	5/8 X 2-5/8" X 4-1/2" X 2" U-BOLT	4 1/2 in	1.06	4.24
3	8	G58FW	5/8" HDG USS FLATWASHER	1/8 in	0.07	0.56
4	8	G58LW	5/8" HDG LOCKWASHER		0.03	0.21
5	8	G58NUT	5/8" HDG HEAVY 2H HEX NUT		0.13	1.04
					TOTAL WT. #	17.53



FINISH:
HOT DIP GALVANIZED.

TOLERANCE NOTES

TOLERANCES ON DIMENSIONS, UNLESS OTHERWISE NOTED ARE:
SAWED, SHEARED AND GAS CUT EDGES ($\pm 0.030"$)
DRILLED AND GAS CUT HOLES ($\pm 0.030"$) - NO CONING OF HOLES
LASER CUT EDGES AND HOLES ($\pm 0.010"$) - NO CONING OF HOLES
BENDS AND ANGLES ARE $\pm 1/2$ DEGREE
ALL OTHER MACHINING ($\pm 0.030"$)
ALL OTHER ASSEMBLY ($\pm 0.060"$)

PROPRIETARY NOTE:
THE DATA AND TECHNIQUES CONTAINED IN THIS DRAWING ARE PROPRIETARY INFORMATION OF VALMONT INDUSTRIES AND CONSIDERED A TRADE SECRET. ANY USE OR DISCLOSURE WITHOUT THE CONSENT OF VALMONT INDUSTRIES IS STRICTLY PROHIBITED.

DESCRIPTION
12' FLEX FORTRESS™ QUAD-PLATFORM MOUNT
WITH WALKWAY

CPD NO. NCS		DRAWN BY NSP 9/25/2024		ENG. APPROVAL 1/2/2025	
CLASS 87	SUB 02	DRAWING USAGE CUSTOMER		CHECKED BY JET	1/2/2025

SITE
PRO

1

A valmont COMPANY

Locations:
New York, NY
Atlanta, GA
Los Angeles, CA
Plymouth, IN
Salem, OR
Dallas, TX
Tampa, FL

Engineering
Support Team:
1-888-753-7446

PART NO. SCX3-FR-K	PAGE 12 OF 12
DWG. NO. FX4P-12W	